



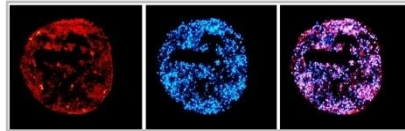
SETTING SCIENCE  
AGENDAS FOR EUROPE

The European Science Foundation (ESF) was established in 1974 to provide a common platform for its Member Organisations to advance European research collaboration and explore new directions for research. It is an independent organisation, owned by 78 Member Organisations, which are research funding organisations and research performing organisations, academies and learned societies from 30 countries. ESF promotes collaboration in research itself, in funding of research and in science policy activities at the European level.  
[www.esf.org](http://www.esf.org)

## RESEARCH NETWORKING PROGRAMME REGENERATIVE MEDICINE (REMEDIC)

From May 2008 to May 2013

[www.esf.org/remedic](http://www.esf.org/remedic)



**REGENERATIVE MEDICINE**, a rapidly evolving and exciting field, can be defined as the process of creating living, functional tissues to repair or replace tissue or organ function lost due to age, disease, damage or congenital defects.

**THE AIM OF THE REMEDIC RESEARCH NETWORKING PROGRAMME** is to put in place a network to facilitate the transfer of knowledge among basic researchers, clinicians and industrial partners, gather information on the current regulations, standards and patents in regenerative medicine and map the current technical research and development resources.

### REMEDIC Activities:

Workshops focusing on key aspects of mesenchymal stem cells will be organised annually.

Support to science meetings (i.e. workshops, conferences) will be provided.

Short and Exchange Visit Grants will be allocated to young scientists.

State-of-the-art reviews based on literature analysis and patent databases will be prepared for peer-reviewed journals, particularly for the *Journal of Cellular and Molecular Medicine*.

Rules and Standards – the regulatory laws, rules and standards governing the use of regenerative medicine will be reviewed.

A dedicated Internet platform will act as the main tool for the distribution of information on REMEDIC, its advancement and results.

### 2011 Activities:

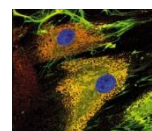
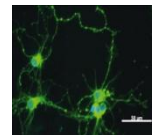
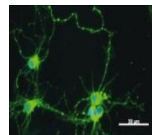
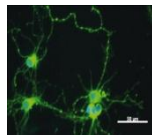
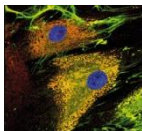
The REMEDIC Programme will co-sponsor the Summer School “REGENERATIVE MEDICINE. From basic research to orthopaedic application and beyond”  
Dates: 25-29 July 2011, Venue: Santander (Spain)

5th UHMWPE International Meeting  
Dates: 23-24 September 2011, Venue: Drexel University, Philadelphia, USA

**PAST Activities:**  
8th IBRO World Congress of Neuroscience  
Dates: 14-18 July 2011, Venue: Florence (Italy)

Tissue Engineering in the Auditory System Meeting  
Date: 2 June 2011, Venue: London (UK)

8th International Conference on Bone Morphogenetic Proteins  
Dates: 15-18 September 2010, Venue: Leuven (Belgium)



**REMEDIC** is led by a Steering Committee composed of 14 members including the Chair and Vice-Chair representing the 16 national organisations and 14 countries that support the Programme.

Chair  
Professor Yrjö T. Konttinen (FI)  
Email: [yrjo.konttinen@helsinki.fi](mailto:yrjo.konttinen@helsinki.fi)

Vice-Chair  
Dr. Gerjo JVM van Osch, Vice-Chair (NL)  
E-mail: [g.vanosch@erasmusmc.nl](mailto:g.vanosch@erasmusmc.nl)

Professor Kristina Arvidson Fyrberg (NO)

Professor Enrique Gómez-Barrena (ES)

Professor Reinhold G. Erben (AT)

Professor Moustapha Kassem (DK)

Professor Katarina Le Blanc (SE)

Professor Frank P. Luyten (BE)

Dr. Ana Paula Pêgo (PT)

Professor Dominique Pioletti (CH)

Professor Laurentiu Popescu (RO)

Professor Gustav Steinhoff (DE)

Professor Eva Syková (CZ)

Dr. Ivo Vanicky (SK)

External Coordinator  
Ms. Eija Kaila (FI)  
Email: [eija.kaila@helsinki.fi](mailto:eija.kaila@helsinki.fi)

ESF Liaison  
Dr. Maria Manuela Nogueira (FR)  
Email: [mnoqueira@esf.org](mailto:mnoqueira@esf.org)

ESF Administration  
Ms. Blanche Facchini (FR)  
Email: [bfacchini@esf.org](mailto:bfacchini@esf.org)

EMRC Standing Committee Representative  
Professor Isabel Varela-Nieto (ES)